

# EAGLE 95





	A	2550 <sup>kg</sup>	2600 <sup>kg</sup>
EAGLE 95	3350	166	167,3
EAGLE 95	3300	165,3	166,6
EAGLE 95	3250	164,7	166
EAGLE 95	3200	163,9	165,2
EAGLE 95	3150	163,3	164,6
EAGLE 95	3100	162,7	164
EAGLE 95	3050	161,9	163,2
EAGLE 95	2850	159,1	160,4
EAGLE 95	2750	157,5	158,8
EAGLE 95	2710	156,9	158,2
EAGLE 95	2650	156,1	157,4

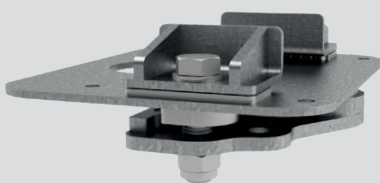
Weight of the fixings approx. 20 kg/pair.

## EAGLE 95

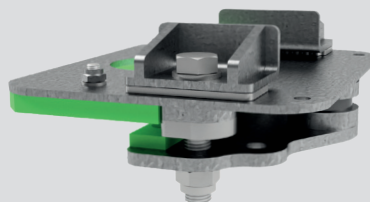
- steel bunk with detachable stakes
- rapid supply of spare parts
- easy mounting without drilling or welding
- preparation for mounting of accessories
- high-strength steel as standard
- wear resistant surface treatment
- bunkframe standard colors anthracite grey and carmine red
- stake standard color silver grey



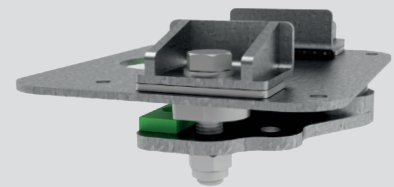
## Fixings



Firm fixing



Friction fixing



Quick-glide fixing